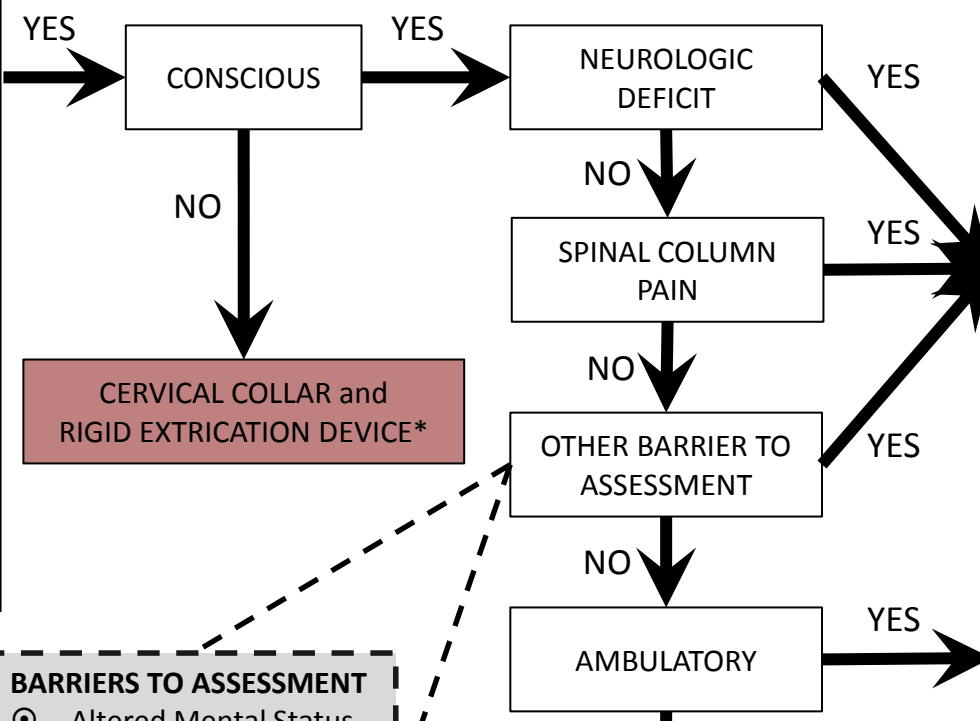


# Selective Spinal Precautions:

## Stage 1: Extrication and Evacuation

PROVIDERS MAY OPT TO USE TOOLS AND TECHNIQUES THAT EXCEED THIS PROTOCOL BASED ON THEIR DISCRETION **ONLY** IF JUSTIFICATION IS DOCUMENTED IN THE PCR

- Mechanism for potential Spinal Column Injury?**
- ⊙ High-risk auto crash:
    - Intrusion (including roof) >12 inches on occupant site or >18 on any site
    - Ejection (partial or complete)
    - Death in same passenger compartment
  - ⊙ Car vs. Pedestrian or Bicyclist >20mph
  - ⊙ Fall > 3x patient height
  - ⊙ Axial Load (diving, sport-related injury)
  - ⊙ Elderly patient with fall from standing height and closed head injury
  - ⊙ EMS provider high index of suspicion



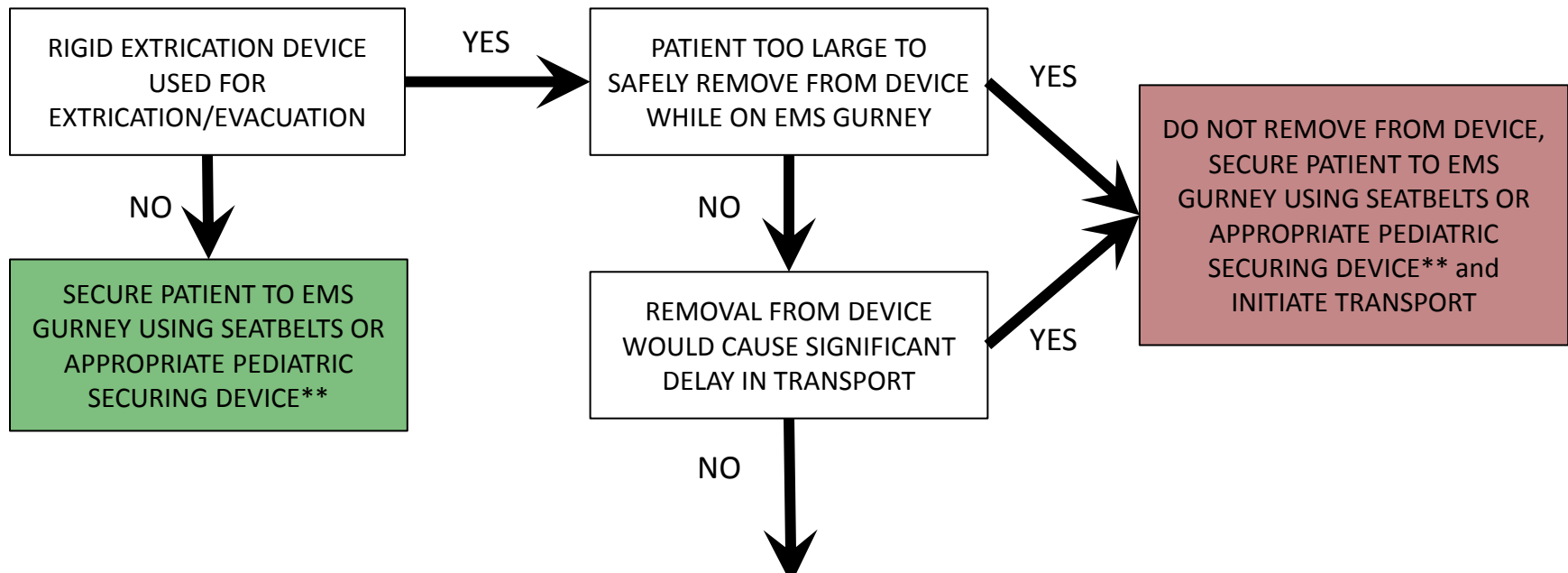
- BARRIERS TO ASSESSMENT**
- ⊙ Altered Mental Status or Confusion
  - ⊙ Alcohol or Drug Intoxication
  - ⊙ Language Barrier
  - ⊙ Uncooperative

- \*RIGID EXTRICATION DEVICES**
- ⊙ Backboard
  - ⊙ Scoop stretcher
  - ⊙ Full-body vacuum splint

# Selective Spinal Precautions:

## Stage 2: Transport

PROVIDERS MAY OPT TO USE TOOLS AND TECHNIQUES THAT EXCEED THIS PROTOCOL BASED ON THEIR DISCRETION **ONLY** IF JUSTIFICATION IS DOCUMENTED IN THE PCR



- \*RIGID EXTRICATION DEVICE REMOVAL TECHNIQUES:**
- ⊙ Log roll
  - ⊙ Multi-person lift
  - ⊙ Unlatch and remove scoop stretchers
  - ⊙ Full-body vacuum splints can be left in place

REMOVE PATIENT FROM RIGID DEVICE\*, SECURE PATIENT TO EMS GURNEY USING SEATBELTS OR APPROPRIATE PEDIATRIC SECURING DEVICE\*\*, and INITIATE TRANSPORT

- \*\*PEDIATRIC SECURING DEVICES**
- ⊙ Baby-pod (0-9kg)
  - ⊙ Pedi-mate (4.5kg-18kg)
  - ⊙ EMS Gurney (>18kg)
  - ⊙ Infant Car seat properly secured in ambulance

This box can be customized for an individual agency to reflect the specific devices they utilize for securing pediatric patients